

# Unrecorded White Metal 18th Century Tokens – Part 3

## – The DNW Forgery Cabinet

Gary Oddie

### Introduction

The previous two notes published on the BNS blog highlighted several series of non-contemporary white-metal late 18<sup>th</sup> century tokens.<sup>(1,2)</sup> Essentially all were found to be cast or struck copies, made using moulds or dies created from genuine tokens. As might have been expected the surfaces gave away clues and the edges were never quite right.

Subsequently, Peter Preston-Morley of DNW, has provided a group of questionable tokens for study, from the DNW forgery cabinet. The pieces were roughly sorted by metal appearance and each piece was given a reference number DNW-001 etc as they were examined properly for the first time. Those that were white metal or off metal are presented below. Using XRF analysis to determine the metals allowed several other ‘far from copper’ pieces to be identified. Each piece was in a 2×2 envelope, some with tickets and those that add details of provenance are illustrated in the Appendix.

Each piece has a basic description and illustration (125%), followed by comments and a close-up of some feature, usually the edge, that gives the game away. This is a more miscellaneous accumulation than in the previous notes but comparison allows the pieces to be grouped by specific manufacturer or metal (tin) content.

### Similar to the Baldwin’s Basement Group

- Obv. **LOUIS . XVI ET. M . ANTOINETTE . ROI ET REINE DE FRANCE** around two busts facing right and date **1795**
- Rev. **A TRUE HEARTED SAILOR** around a sailor standing with pipe, cane and bowl.
- Edge. Plain (collar?) with file marks.
- Details. Cast white metal, 29.72 mm, 9.202 g.  
**Sn 84.1%, Pb 7.97%, Sb 5.0%, Cu 1.7%, Si 0.9%** and other trace metals.
- Notes. Mule Middx D&H [rev 492](#) / Middx D&H [rev 713](#).  
[The rev is also the obv of D&H Middx 857.](#)



### Almost Pure Tin

- Obv. **SKIDMORE . 123 HIGH-HOLBORN . LONDON / DEALER . IN . COINS . MEDALS . &c** around a small wreath and arms in shield
- Rev. **DUKE . OF . YORK .** Around a bust left.
- Edge. Plain (collar?) with faint scratches.
- Details. Cast? white metal, silvered 27.79 mm, 8.714 g.  
**Sn 99.8%, Cu 0.2%, Pb 0.06%** and nothing else detected.
- Notes. Middx D&H 519.



Obv. **SISE LANE HALFPENNY** around seated with sword and shield.  
 Rev. **KING . LORDS . COMMONS** around a crowned triangle held by two hands  
**CONSTITUTION** in middle.  
 Edge. Plain with metal overhang.

Details. Cast? white metal, 29.30 mm, 9.423 g.  
**Sn 97.5%**, Si 0.9%, Cu 0.7%, Pb 0.6% and other trace metals.  
 Notes. Middx D&H 294c.



### High Tin Content Group (80-90%)

Obv. **AUGT 24-96 SR GEORGE COOK**  
**MAYOR OF GARRAT ELECD** around a man standing left with pipe, mug and barrel.  
 Rev. **FRENCH LIBERTY** around a man gnawing on a bone.  
 Edge. Plain (collar).

Details. Struck white metal, 32.82 mm, 15.497 g.  
**Sn 85.1%, Pb 8.8%, Cu 2.6%**, P 1.4%, Sb 1.0% and other trace metals.  
 Notes. Surrey D&H 2A.



Obv. **Nº 123 HIGH HOLBORN LONDON** around a register stove.  
 Rev. **SIR JEFFERY DUNSTAN 1795** around a deformed dwarf.  
 Edge. Plain (collar?) with faint scratches.  
 Details. Cast white metal, 23.04 mm, 4.123 g.  
**Sn 83.3%, Pb 10.7%**, Cu 2.7%, Sb 2.3% and other trace metals.  
 Notes. Mule Middx obv D&H 1074/ Middx obv D&H 1056. [The rev is as the rev of Middx 1056.](#)



Obv. **PIDCOCK'S / GRAND . MENAGERIE .**  
**EXETER . CHANGE . LONDON**  
 Around a lion couchant right.  
 Rev. **EXETER CHANGE / STRAND LONDON**  
 Around a two headed cow right.  
 Edge. Plain (collar?) with traces of burnishing.

Details. Cast white metal, 30.23 mm, 10.327 g.  
**Sn 80.2%, Pb 11.7%, Sb 3.2%**, P 1.8%, Cu 1.6% and several other trace metals.  
 Notes. Mule Middx D&H [obv 432-435/ Middx D&H rev 423.](#)





## A New Group With Faint Oblique Edge Milling

Obv. **STANHOPE NOBLE WITHOUT NOBILITY**

Around bust to left.

Rev. Oak wreath around druid's head to left.

Edge. Faint oblique milling.

Details. Cast white metal, 29.18 mm, 10.081 g.

**Sn 87.7%, Pb 8.6%, Cu 1.5%, Sb 1.3%, Si 0.7%**  
and other trace metals.

Notes. Mule Middx D&H 1040 / Anglesey D&H 438b  
(Thanks to Merfyn Williams)



DNW-002

Raised lip



Obv. **PAYABLE AT SKIDMORES FURNITURE  
REPOSITORY / N° 123 HIGH HOLBORN  
LONDON** around a register stove

Rev. **MAY DUNMOW PROSPER 1793** around a  
shield.

Edge. Faint oblique milling.

Details. Cast white metal, 29.26 mm, 11.457 g.

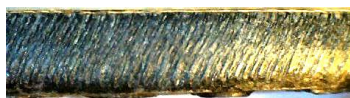
**Sn 87.2%, Pb 5.4%, Cu 4.1%, Sb 2.5%, Si 0.7%**  
and other trace metals.

Notes. Dunmow, Essex D&H 13b.



DNW-007

Casting flaws



Obv. **LONG . LIVE . THE . KING .**

around bust of George III right.

Rev. **LIBERTY . PEACE . COMMERCE**

around a cap of liberty and fouled anchor

Edge. Faint oblique milling.

Details. Cast white metal, 30.64 mm, 12.140 g.

**Sn 59.3%, Pb 27.8%, Cu 7.4%, Sb 3.6%, Si**  
1.5%, Zn 0.2% and nothing else detected.

Notes. Mule Middx **rev** D&H 499 / rev D&H 761.



DNW-006

Fuzzy details



Obv. **UNITED TOKEN** around a head right, star  
radiating above.

Rev. **HALFPENNY** above a guillotine.

Edge. Faint oblique milling.

Details. Cast white metal, 29.14 mm, 11.746 g.

**Sn 58.4%, Cu 19.4%, Pb 16.9%, Sb 4.7%** and  
other trace metals.

Notes. Middx D&H 901.



DNW-012

Casting flaws



## A Group With 40-70% Tin

Obv. **DUDLEY TOKEN** around distant view of castle

Rev. **I AMONG SLAVES ENJOY MY FREEDOM**  
Around a cat and 1796.

Edge. Plain with coarse scratches.

Details. Cast bronze?, 29.03 mm, 10.502 g.

**Sn 61.3%, Cu 18.2%, Pb 16.1%, Sb 3.5%** and other trace metals.

Notes. Worcestershire D&H 12.



DNW-024

Mould damage



Obv. **COALY TYNE / 1795**

Around a man in a barge sailing.

Rev. **NOTED ADVOCATES FOR THE RIGHTS OF MAN** around **THO<sup>S</sup> SPENCE &c**

Edge. Plain not in collar.

Details. Cast bronze?, 28.73 mm, 10.406 g.

**Sn 69.3%, Cu 19.6%, Pb 6.2 %, Sb 4.7%, Ag 0.1%** and other trace metals.

Notes. As Northumberland D&H 19 but plain edge.



DNW-017

Raised lip



Obv. **J. SPENCE . SLOP-SELLER . NEWCASTLE**

Around a sailor.

Rev. **THE GALLANT GARB OF SCOTLAND**

Around an armed highlander.

Edge. Plain with faint scratches.

Details. Cast bronze?, 29.00 mm, 9.373 g.

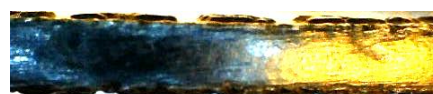
**Sn 56.8%, Cu 31.3%, Sb 5.4%, Pb 4.6%, Fe 1.3%** and other trace metals.

Notes. As Northumberland D&H 10 but plain edge.



DNW-018

Bubble in metal



Obv. **COALY TYNE / 1795**

Around a man in a barge sailing.

Rev. **CHURCH AND KING .**

Laureate bust to right.

Edge. Plain with coarse scratches.

Details. Cast bronze?, 28.59 mm, 10.466 g.

**Sn 56.9%, Cu 23.8%, Pb 17.2% Sb 1.8%** and other trace metals.

Notes. Northumberland D&H 18.



DNW-020

Raised lip





Obv. **J . SPENCE . SLOP-SELLER . NEWCASTLE**  
Around a sailor.  
Rev. **LET TYRANTS TREMBLE AT THE CROW**  
**OF LIBERTY** around a lion dismayed.  
Edge. Plain with faint scratches.

Details. Cast bronze?, 28.83 mm, 9.323 g.  
**Sn 55.3%, Cu 35.9%, Sb 4.4%, Pb 3.5%** and other trace metals.  
Notes. Northumberland D&H 11.



DNW-021

Mould damage



Obv. **ROYAL MALE TIGER 1796**  
around a tiger walking left,  
Rev. **BIRDS . AND . BEASTS / 1795** below an eagle  
with radiation above.  
Edge. Plain (collar?) with traces of burnishing.

Details. Bronze?, 27.59 mm, 9.873 g.  
**Sn 50.1%, Cu 41.3%, Pb 3.4%, Sb 2.2%, Si 2.6%**  
and other trace metals.  
Notes. Mule Middx obv D&H 441-43 / rev D&H 415.



DNW-005

Mould damage



Obv. **PIDCOCK'S / GRAND . MENAGERIE .**  
**EXETER . CHANGE . LONDON**  
Around a zebra right.  
Rev. **EXETER CHANGE / STRAND LONDON**  
Around a two headed cow right.  
Edge. Plain with traces off burnishing.

Details. Cast in bronze?, 28.79 mm, 8.154 g.  
**Sn 43.1%, Cu 41.2%, Pb 10.0%, Ti 2.3%, Sb 1.5%, V 1.0%** and other trace metals.  
Notes. Mule Middx D&H rev 421 / Middx D&H rev 422.  
**Obv is obv of Middx 450.**



DNW-022

Fuzzy details



## High Lead Content Pieces

Obv. **A TRUE HEARTED SAILOR** around a sailor  
standing with pipe, cane and bowl.  
Rev. **REMEMBER ME WHEN THIS YOU SEE**  
around a crowned anchor with two hearts  
Edge. Plain with traces off burnishing.

Details. Cast white metal?, 29.41 mm, 11.821 g.  
**Pb 53.5%, Sn 34.9%, Cu 7.8%, Sb 2.3%** and other trace metals.  
Notes. **D&H Middx 857**



DNW-016

Poor casting, worked surface



Obv. **PRINCE OF WALES ELECTED GM . 24 NOV, 1790** around Freemasons' Arms.  
 Rev. **SIT LUX ET LUX FUIT** around cupid and masonic emblems.  
 Edge. Plain with faint scratches.

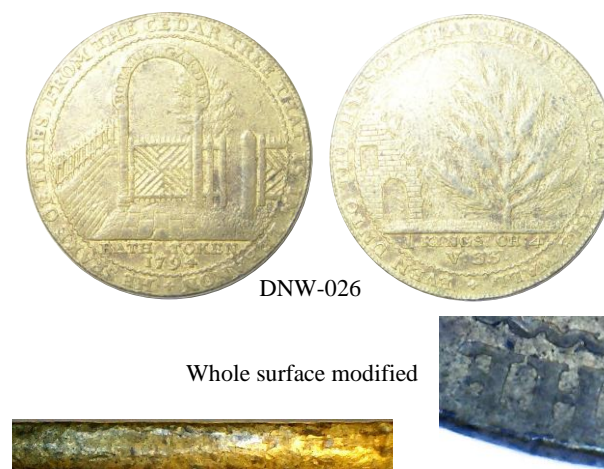
Details. Struck in lead, coloured, 29.06 mm, 11.245 g.  
**Pb 69.6%, Cu 19.9%, Sn 7.6%, Sb 0.9%** and other trace metals.  
 Notes. Middx D&H 372h.



### Other Off-Metal Creations

Obv. **HE SPAKE OF TREES, FROM** &c around entrance to Botaic Gardens and **BATH TOKEN 1794.**  
 Rev. **EVEN UNTO THE HYSSOP** &c around shrubs on a wall and a tree **1 KINGS** &c below.  
 Edge. Plain (no collar) slightly rough.

Details. Cast brass?, 30.36 mm, 8.649 g  
**Cu 94.7%, Zn 3.6%, W 0.7%** and other trace metals.  
 Notes. Somerset D&H 26.



Obv. **HE SPAKE OF TREES, FROM** &c around entrance to Botaic Gardens and **BATH TOKEN 1794.**  
 Rev. **EVEN UNTO THE HYSSOP** &c around shrubs on a wall and a tree **1 KINGS** &c below.  
 Edge. Plain (no collar) slightly rough.

Details. Cast silver?, 30.44 mm, 8.901 g  
**Cu 88.8%, Ag 6.0%, Si 4.6%, Zn 0.2%** and other trace metals.  
 Notes. Somerset D&H 26.





## Electrotypes

Obv. **FOR THE CONVENIENCE OF THE PUBLIC**  
1794 around fame flying left with trumpet.  
Rev. **LIBERTY . PEACE . COMMERCE**  
around a cap of liberty and fouled anchor.  
Edge. Plain with visible joint.  
Details. Electrotypes, 29.04 mm, 11.057 g.  
**Sn 87.6%, Pb 8.6%, Cu 1.0%, Sb 1.0%, P 0.9%**  
and other trace metals.  
Notes. Cork, D&H 12.



Obv. **PIDCOCK'S / GRAND . MENAGERIE .**  
**EXETER . CHANGE . LONDON**  
Around a zebra right.  
Rev. **ORANGE CRESTED COCKATOO / 1801**  
Around a cockatoo.  
Edge. Plain with visible joint.  
Details. Electrotypes, 30.34 mm, 9.342 g.  
**Sn 66.3%, Cu 29.0%, Pb 2.6%, Sb 0.9%** and  
other trace metals.  
Notes. **Middx D&H 450.**



## Discussion and Conclusions.

This short note has presented a series of pieces from the DNW forgery cabinet. On close inspection all are clearly counterfeits, from fuzzy details, to bubbles in the metal, to raised lines at the edges of moulds and marks indicating the edges have been 'touched up', some more obvious than others. Some pieces are previously unrecorded mules, others are of popular designs such as those issued by Thomas Spence, all likely created for collectors of the series. Several of the pieces have envelopes and tickets from well-known collectors and dealers.

The counterfeits fall into similar groups to this observed previously: similar to the Baldwin's basement group, almost pure tin, high tin (80-90%), tin (40-70%) to which is added a new group of four pieces with faint oblique edge milling and a high lead content group.

Two off-metal creations and two electrotypes are also included to show how they might be detected.

This and the previous notes should be useful in differentiating between genuine and spurious white-metal 18<sup>th</sup> century tokens as well as suggesting groupings that may point to specific manufacturers.

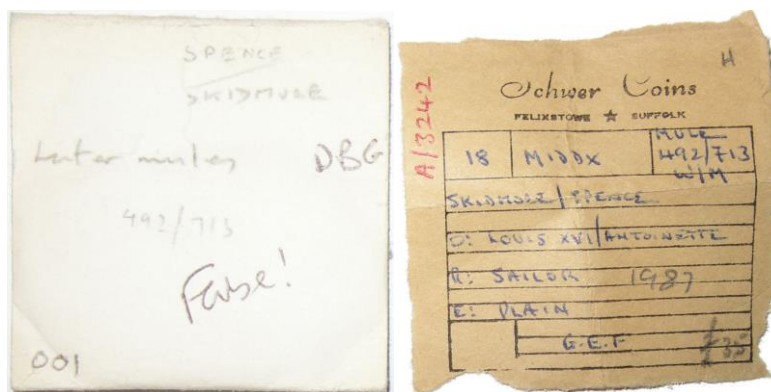
## References and Acknowledgements

- (1) G. Oddie. Unrecorded White Metal 18<sup>th</sup> Century Tokens? BNS blog, 19 October 2021.  
<https://britnumsoc.files.wordpress.com/2021/10/214-white-metal-18thc-oddie-004-blog.pdf>
- (2) G. Oddie. Unrecorded White Metal 18<sup>th</sup> Century Tokens – Part 2. BNS blog, 12 January 2022.  
<https://britnumsoc.files.wordpress.com/2022/01/227-white-metal-18thc-pt2-oddie-001-blog.pdf>

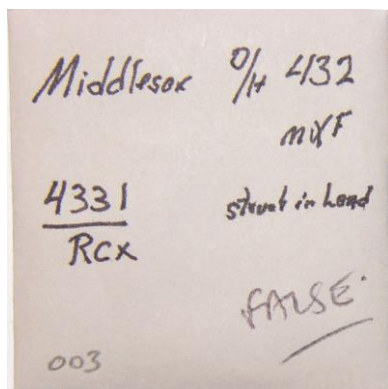
Thanks to Peter Preston-Morley for loaning this group of pieces and also to Merfyn Williams for identifying the Druid die (DNW-002), especially as I have never got past counting the acorns on the series! **Thanks also to Michael Dickinson for providing some corrections and suggestions, post publication on 30 March 2022, and these are included in blue.**

## Appendix

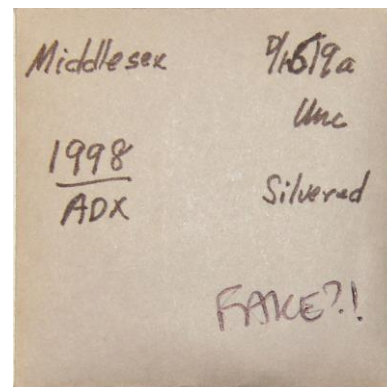
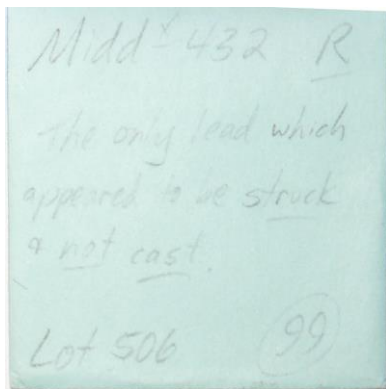
The following pages illustrate the envelopes and tickets for the pieces described in the main text. The pieces have passed through many dealers' hands – Schwer, McKivor, Davissons etc. and also private collections, David Griffiths (DBG), Robinson Brown, O.P. Eklund, David Young, etc.



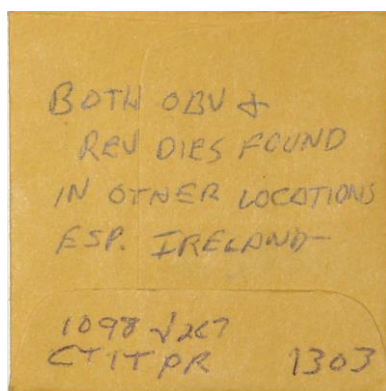
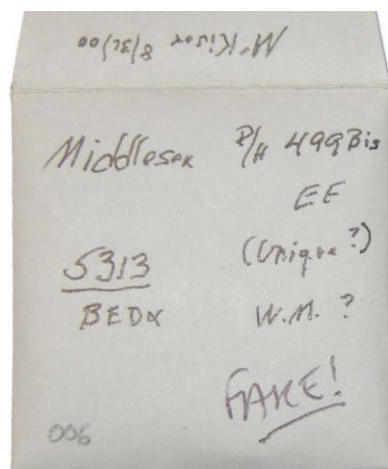
DNW-001



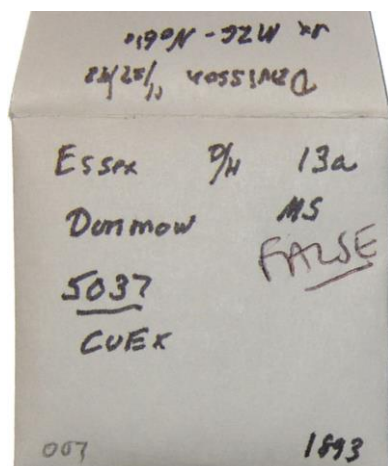
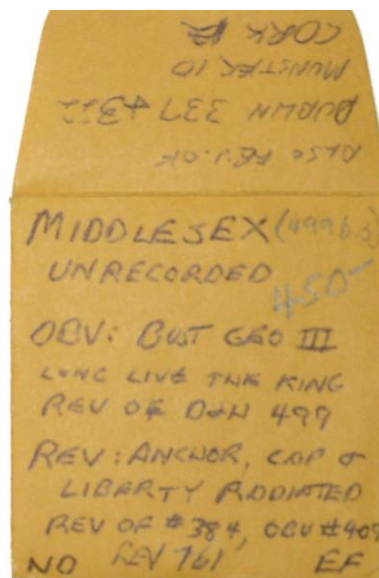
DNW-003



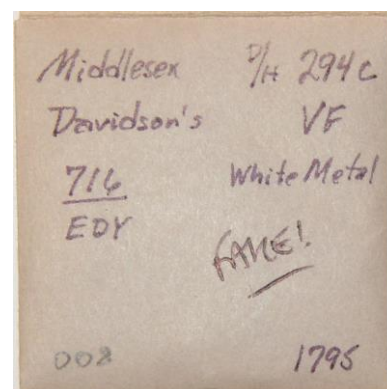
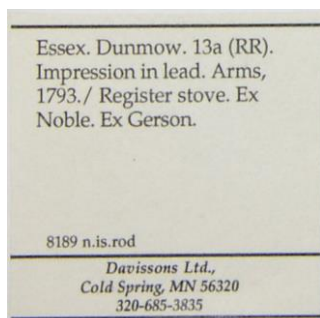
DNW-004



DNW-006

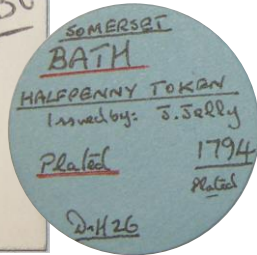
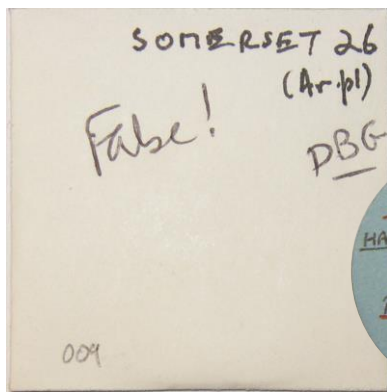


DNW-007

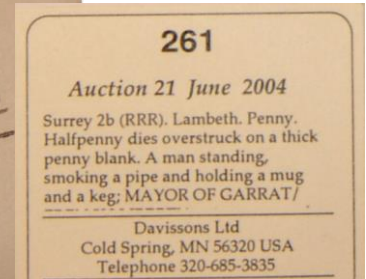
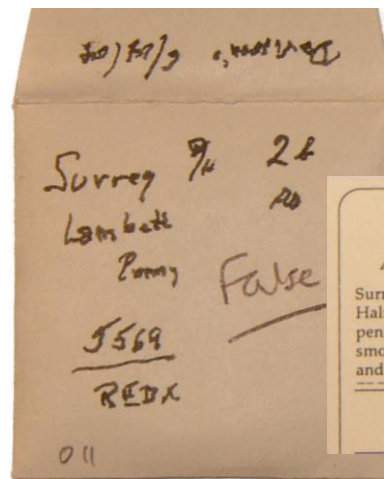


DNW-008

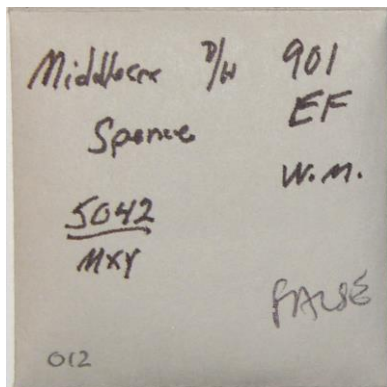




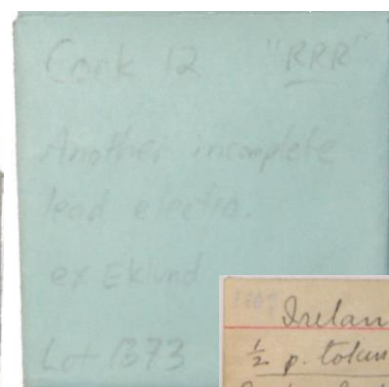
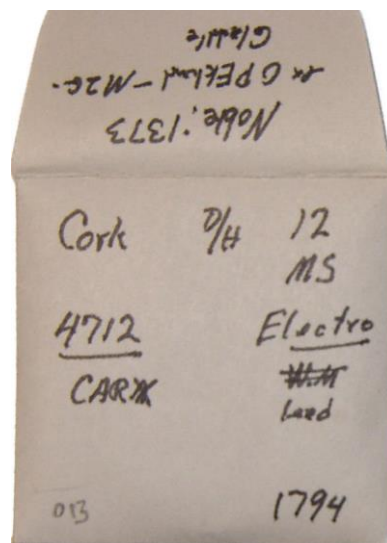
DNW-009



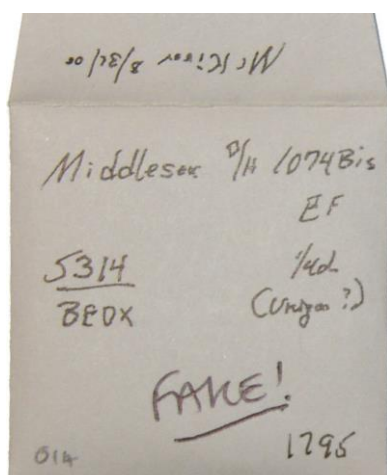
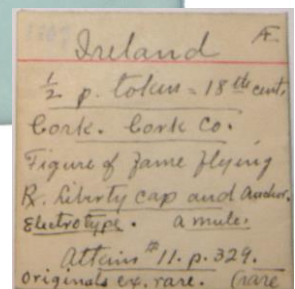
DNW-011



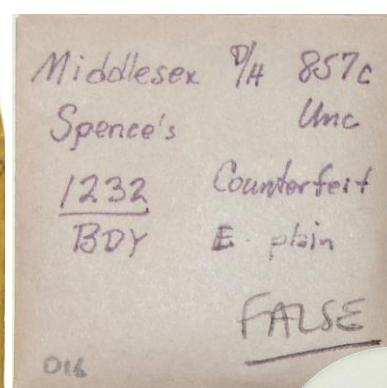
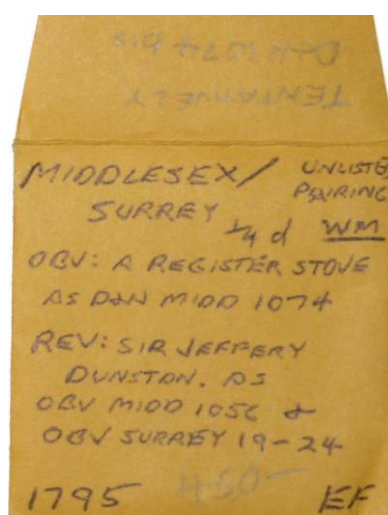
DNW-012



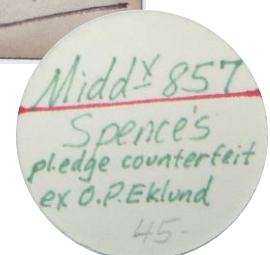
DNW-013

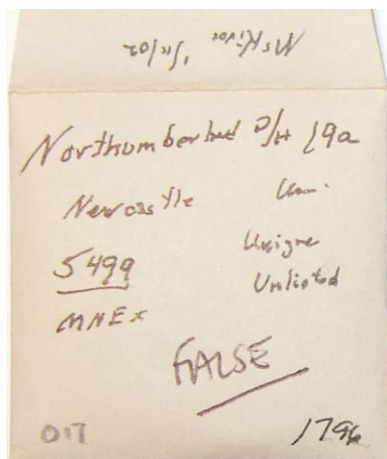


DNW-014

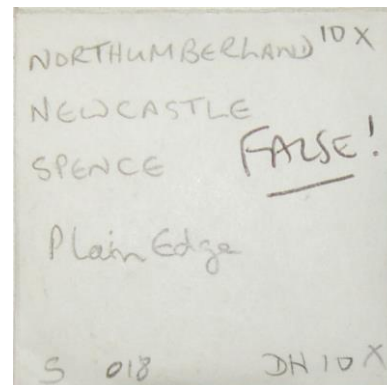
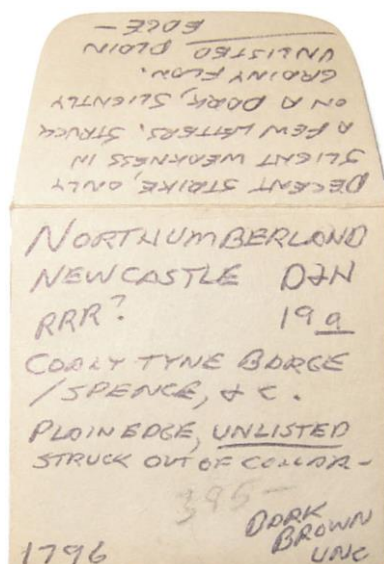


DNW-016

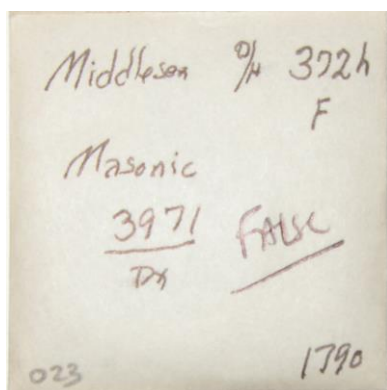




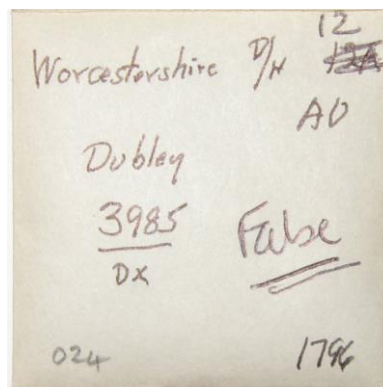
DNW-017



DNW-018



DNW-023



DNW-024



DNW-026

