

A Die Study of James I Shillings – Third Issue, mm Spur Rowel

Gary Oddie

Introduction

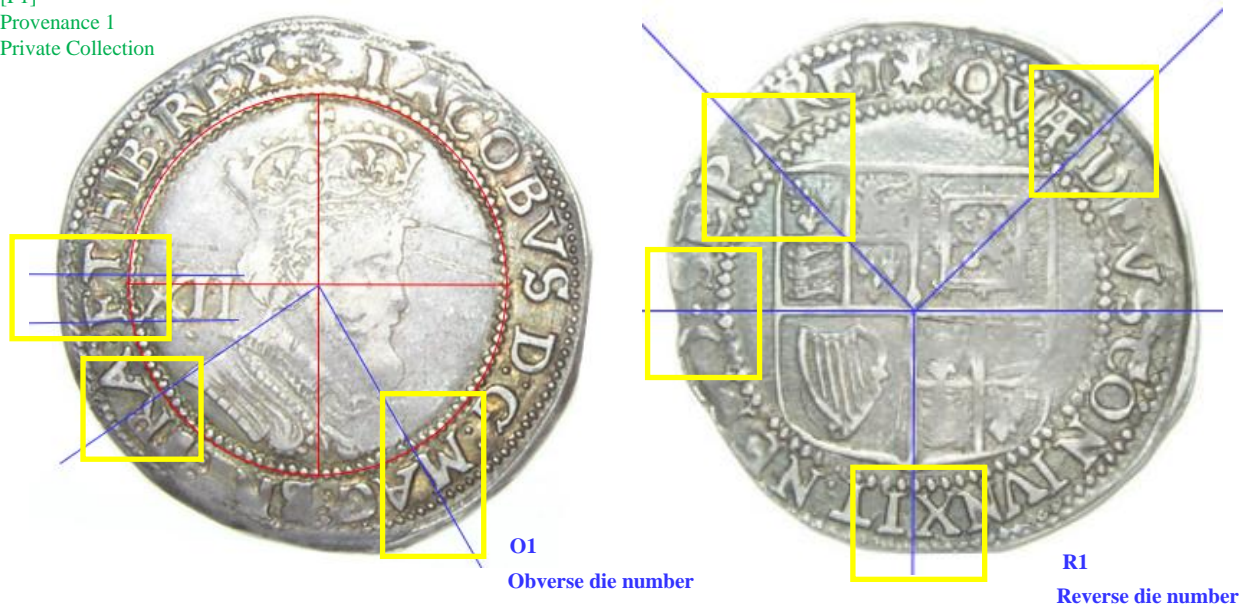
This note continues the die studies of James I shillings, tackling some of the easier (rarer) mintmarks first.

Method

As previously, the coin is rotated to make the XII horizontal and guidelines drawn above and below the XII and from the centre of the inner circle past the edge of the bust closest to the inner circle. On the reverse the centre of the shield is used as the origin and guidelines drawn through the top left and top right corners of the shield.

Summary of Results

[P1]
Provenance 1
Private Collection



This is one of the rarer mintmarks and just three specimens have been found.

Type		Obv. Legend	Obv. Dies	Rev. Dies
Issue	Bust			
3 rd	5 th	IACOBVS D G MAG BRI FRA ET HIB REX	1	1
Totals			1	1

Struck between 9th June 1619 and 23rd June 1620, the silver at the trial of the pyx was just 5s4d, which would account for the rarity of this mintmark. The one obverse and one reverse die found would have easily been sufficient even if all of the silver from this period had been coined into shillings (ignoring the 6d, 2d, and 1d).

The Die Study

IACOBVS D G MAG BRI FRA ET HIB REX



Sources of Images and Acknowledgements

The following are thanked for the use of their images:

[P1] Noonans 14-11-2018 Lot 455

Thanks also to David Holt and Nigel Prevost for useful contributions regarding provenances and to Leeds Museum for a photo of a piece in their collection from the Grewelthorpe hoard⁽¹⁾.

Discussion and Conclusions

With just two specimens located, from the same die pair, this is a truly rare coin. Application of the usual statistical methods is at best questionable, but does suggest that the die pair found is likely the only one used for this issue.

		Obverse	Reverse
Sample size	n	2	2
Number of dies	d	1	1
Singletons	d ₁	0	0
2 examples	d ₂	1	1
3 examples	d ₃		
4 examples	d ₄		
5 examples	d ₅		
6 examples	d ₆		
Coverage	C _{est}	1	1
Estimated dies	d ₋	1	1
	d _{est}	1	1
	d ₊	3	3

Table 1. Die statistics of the James I shillings, second issue, mintmark Spur Rowel.

A piece, noted by Snelling and mentioned in Hawkins is unlikely to be the piece illustrated here, but it is also expected that other examples exist, but have been missed by the search.

Reference

- (1) C. P. Barclay. *A Civil War hoard from Grewelthorpe, North Yorkshire*. BNJ vol. 61 (1991), 76-81. https://www.britnumsoc.org/publications/Digital%20BNJ/pdfs/1991_BNJ_61_9.pdf

