

A Die Study of James I Shillings – Second Issue, mm Scallop

Gary Oddie

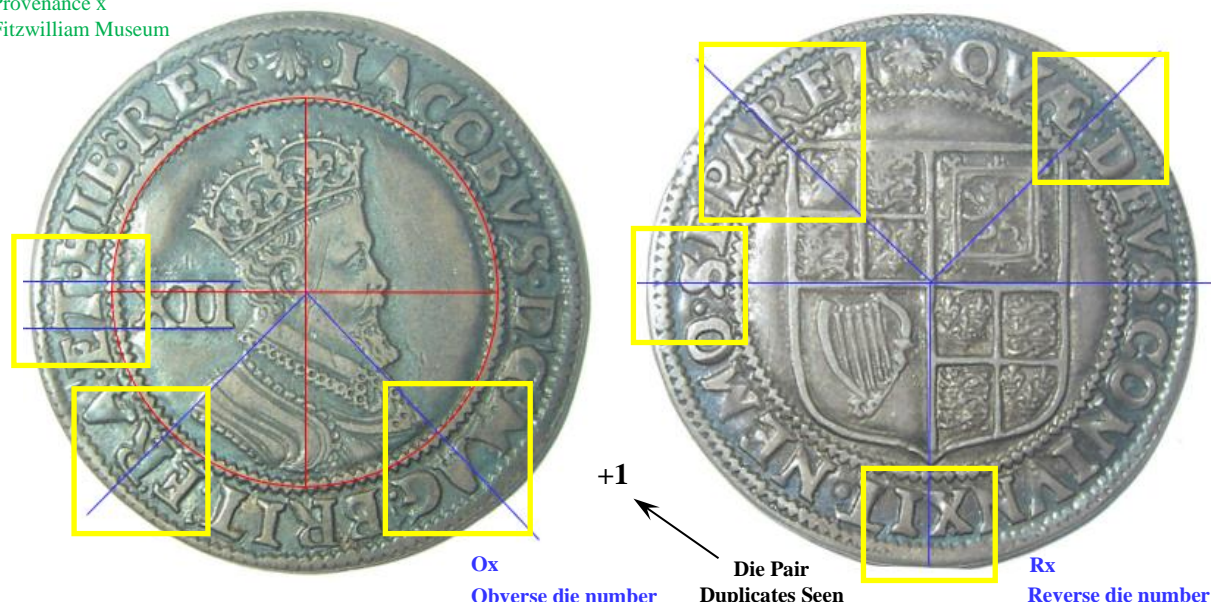
Introduction

This note continues the die studies of James I shillings, working backwards through the mintmarks of the second issue. Here the mintmark Scallop is presented – issued between 10th July 1606 and 30th June 1607 when £75 0s 10d of silver was presented at the Trial of the Pyx. During this period of nearly a year a full set of denominations was issued: 5s, 2/6, 1/-, 6d, 2d, 1d and ½d.

Method

The obverse image is scaled to fit a nominal inner circle (red) and the coin is rotated to make the XII horizontal and guidelines drawn above and below the XII (blue) and from the centre of the inner circle past the edges of the bust closest to the inner circle (blue). On the reverse the centre of the shield is used as the origin and guidelines drawn through the top left and top right corners of the shield (blue). The features in the yellow boxes are sufficient to identify the individual dies.

[Px]
Provenance x
Fitzwilliam Museum



Summary of Results

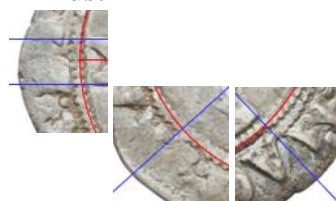
A total of 48 specimens with mm scallop have been found.

The table below lists the legend varieties in the usual alphabetical order, the same order in which the die study is presented.

Type		Obv. Legend	Obv. Dies	Rev. Dies
Issue	Bust			
2 nd	4 th	IACOBVS D G MAG BRIT FRA ET HI REX	7	7
		IACOBVS D G MAG BRIT FRA ET HIB REX	30	33
Totals			37	40

The Die Study
IACOBVS D G MAG BRIT FRA ET HI REX

4th Bust



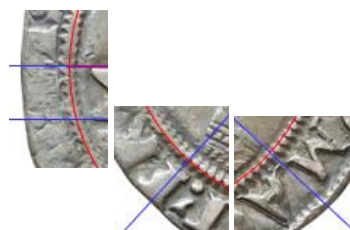
[P1]



O1



R1



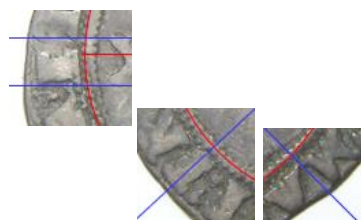
[P2]



O2



R2



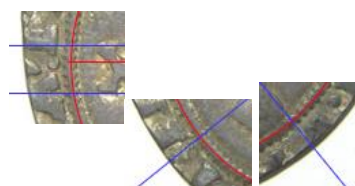
[P3]



O3



R3



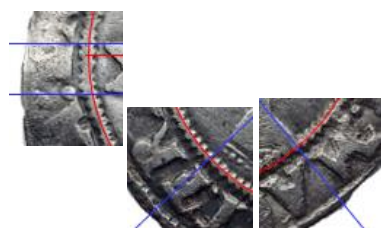
[P4]



O4



R4



[P5]



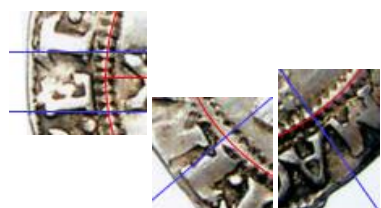
O5



R5



SSEPARI



[P6]



O6



R6



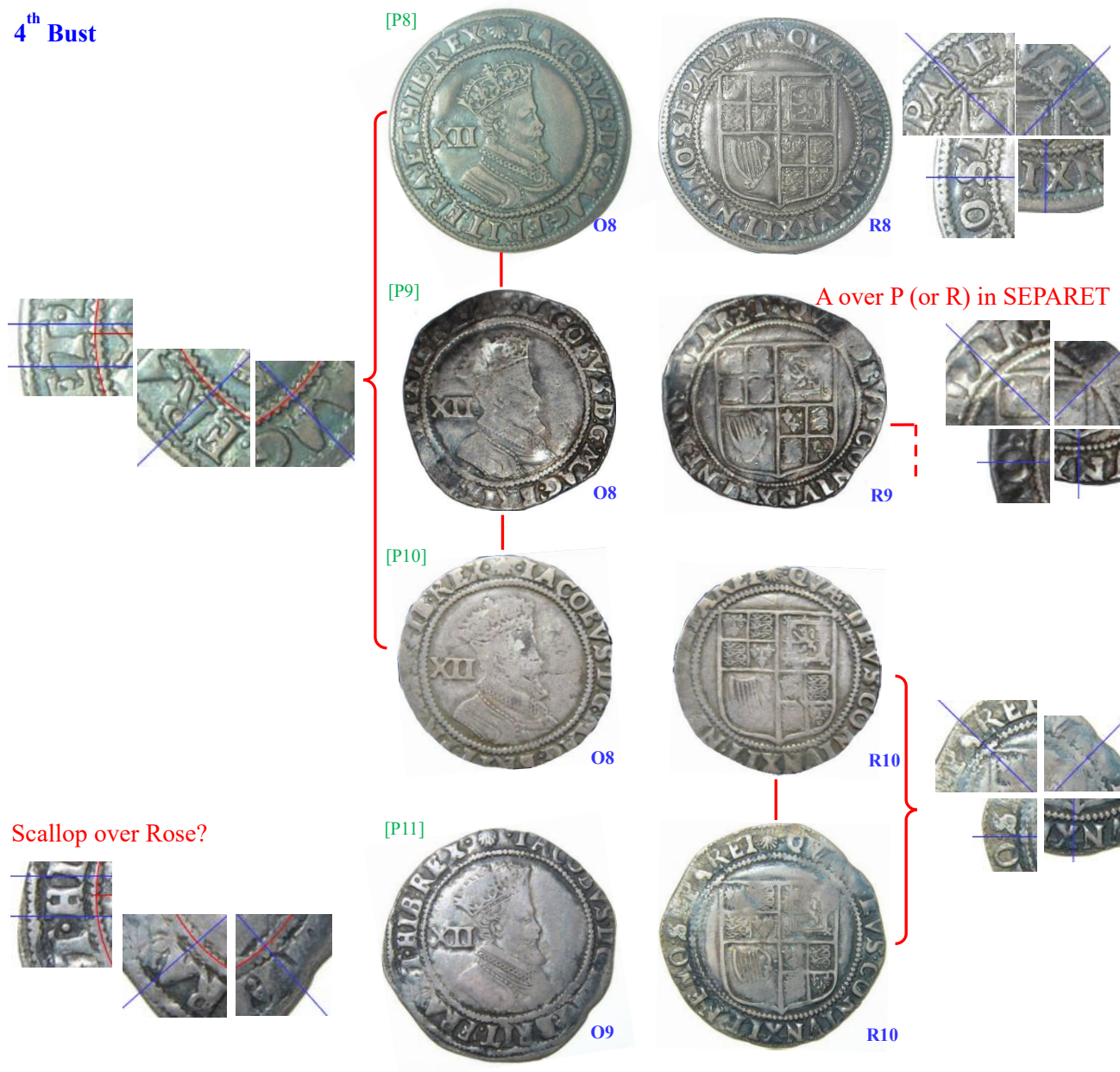
IACOBVS D G MAG BRIT FRA ET HI REX - continued

4th Bust



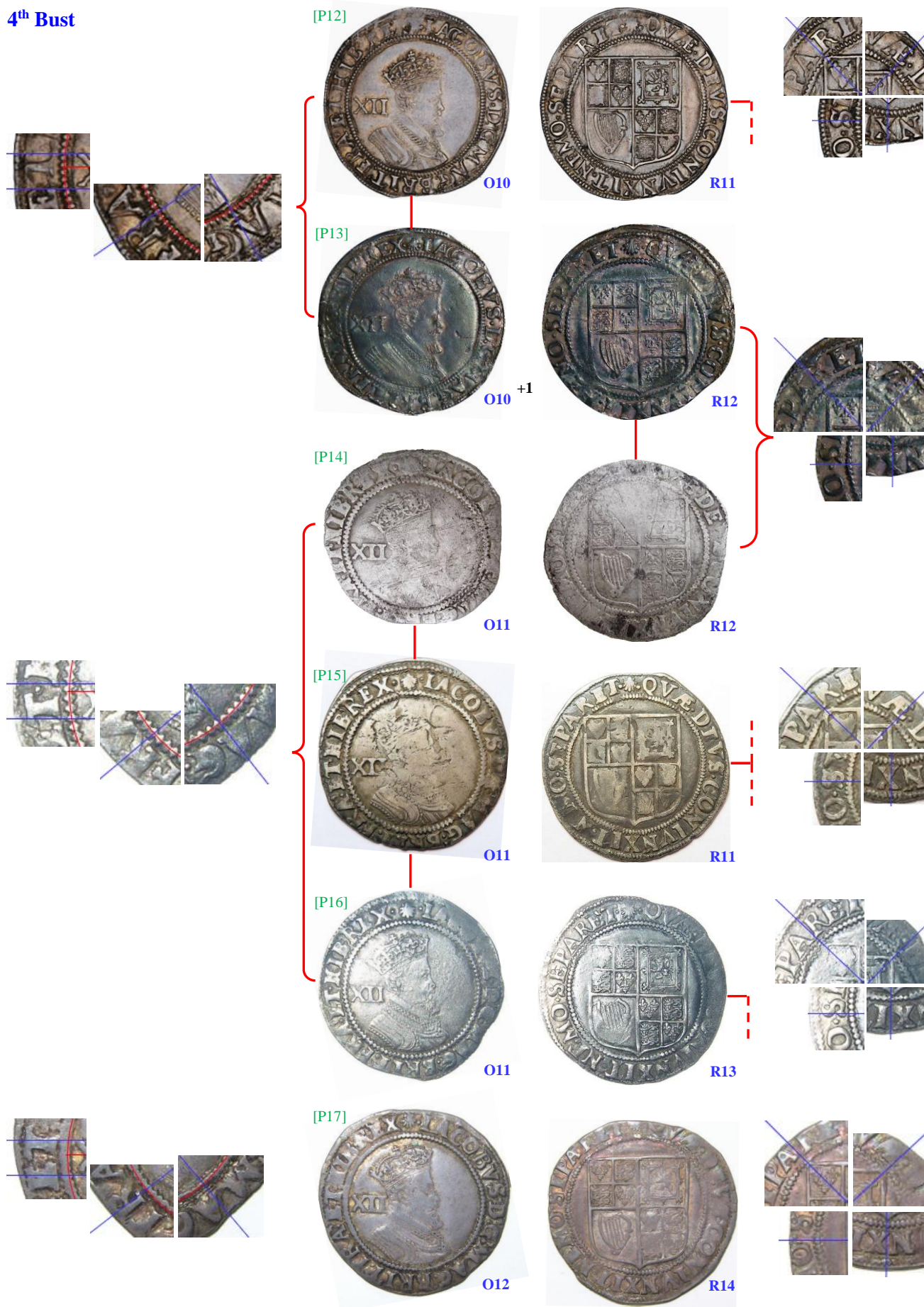
IACOBVS D G MAG BRIT FRA ET HIB REX

4th Bust



IACOBVS D G MAG BRIT FRA ET HIB REX - continued

4th Bust



IACOBVS D G MAG BRIT FRA ET HIB REX - continued

4th Bust



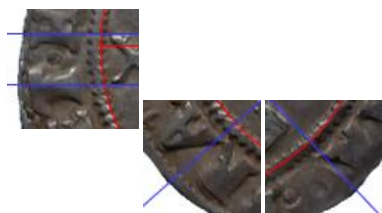
[P18]



O13



R15



[P19]



O14



R11



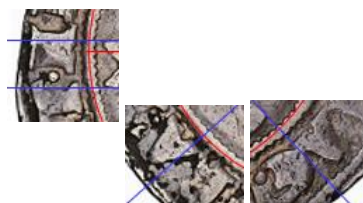
[P20]



O14



R16



[P21]



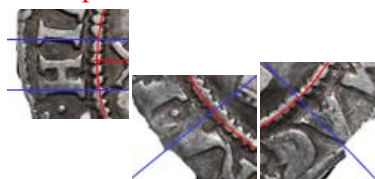
O15



R17



Scallop over Rose?



[P22]



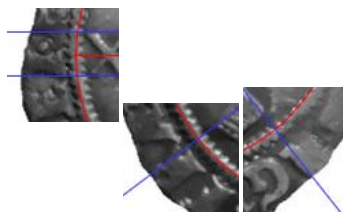
O16



R18



Scallop over Rose



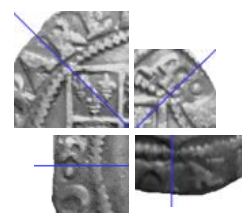
[P23]



O17

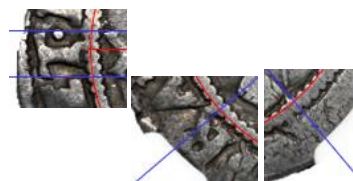


R19



IACOBVS D G MAG BRIT FRA ET HIB REX - continued

4th Bust



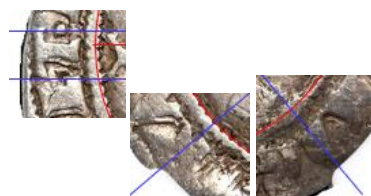
[P24]



O18



R20



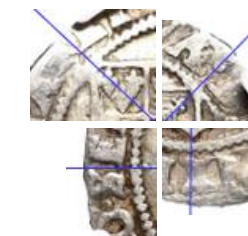
[P25]



O19



R21



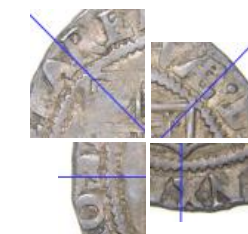
[P26]



O20



R22



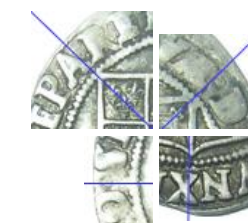
[P27]



O20



R23



[P28]



O20



R13



[P29]



O20

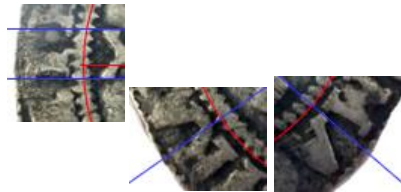


R9



IACOBVS D G MAG BRIT FRA ET HIB REX - continued

4th Bust



[P30]



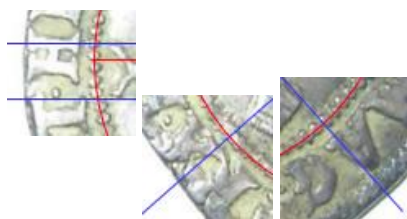
O21



R24



Scallop over Rose?



[P31]



O22



R25



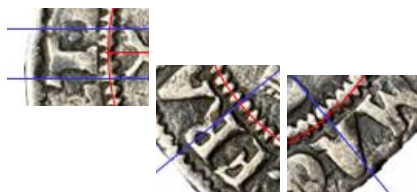
[P32]



O22



R26



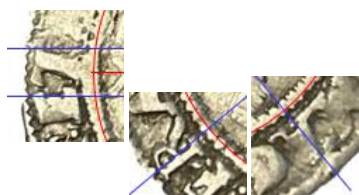
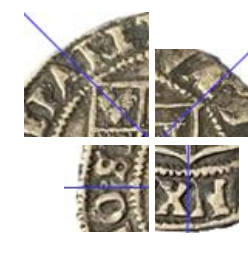
[P33]



O23



R27



[P34]



O24



R28



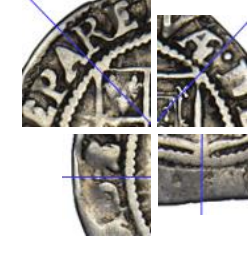
[P35]



O25



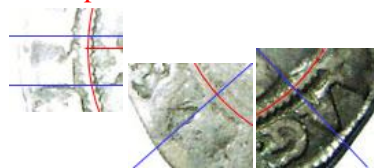
R29



IACOBVS D G MAG BRIT FRA ET HIB REX - continued

4th Bust

Scallop over Rose?



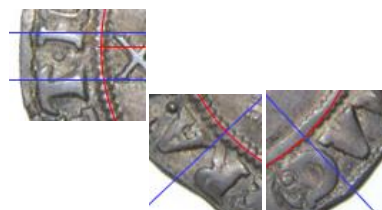
[P36]



O26



R30



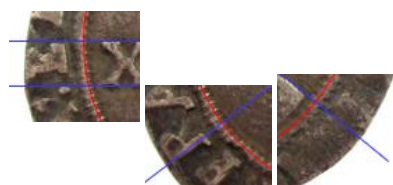
[P37]



O27



R31



[P38]



O28



R32



Scallop over Rose?



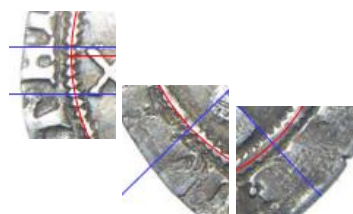
[P39]



O29



R33



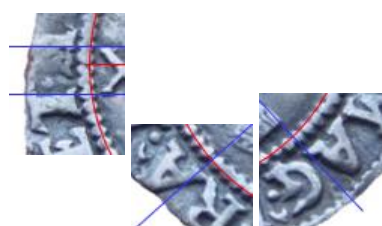
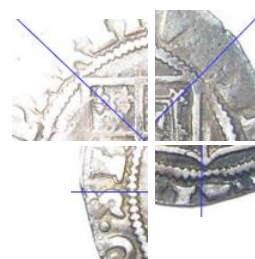
[P40]



O30



R34



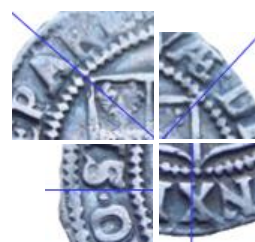
[P41]



O31

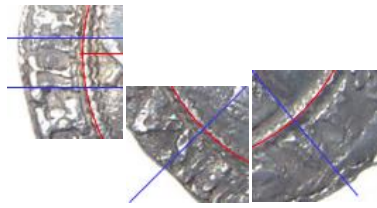


R35



IACOBVS D G MAG BRIT FRA ET HIB REX - continued

4th Bust



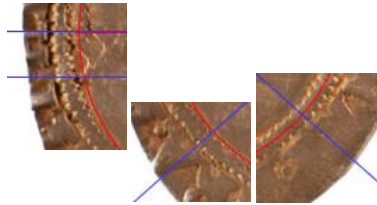
[P42]



O32



R36



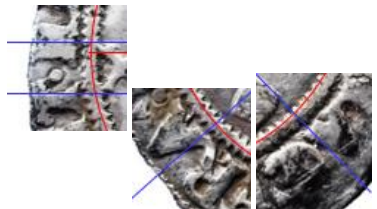
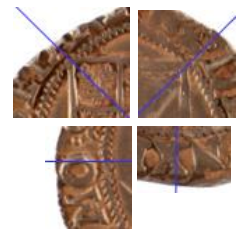
[P43]



O33



R37



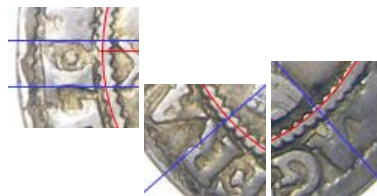
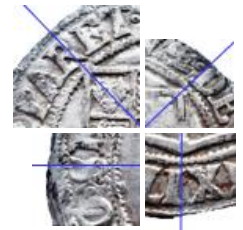
[P44]



O34



R38



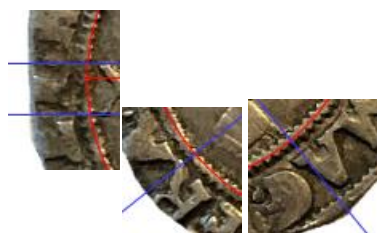
[P45]



O35



R39



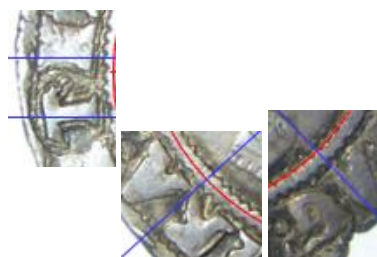
[P46]



O36



R40



[P47]



O37



R40

Sources of Images and Acknowledgements

The following are thanked for the use of their images:

[P1]	Ashmolean Museum	[P17]	British Museum	[P33]	eBay
[P2]	Ashmolean Museum	[P18]	eBay	[P34]	eBay
[P3]	British Museum	[P19]	eBay	[P35]	eBay
[P4]	British Museum	[P20]	Private Collection	[P36]	Fitzwilliam Museum
[P5]	eBay	[P21]	Brittonum Coins	[P37]	British Museum
[P6]	Private Collection	[P22]	eBay	[P38]	eBay
[P7]	PAS LANCUMD5D3FB	[P23]	eBay	[P39]	Private Collection
[P8]	Fitzwilliam Museum	[P24]	eBay	[P40]	eBay
[P9]	PAS LANCUMD5D3FB	[P25]	eBay	[P41]	eBay
[P10]	eBay	[P26]	British Museum	[P42]	Private Collection
[P11]	British Museum	[P27]	Fitzwilliam, Museum	[P43]	www
[P12]	Brittonum Coins	[P28]	eBay	[P44]	eBay
[P13]	eBay	[P29]	eBay	[P45]	Private Collection
[P14]	eBay	[P30]	eBay	[P46]	Private Collection
[P15]	eBay	[P31]	Private Collection	[P47]	Private Collection
[P16]	Private Collection	[P32]	eBay		

Thanks to David Holt, Nigel Prevost, and members of the English Hammered and Early Milled Coin Collectors Group on Facebook for providing images: Iain Davidson, Colin Gower and Tim Cook.

Also thanks to Tom Hockenhull and the team at the British Museum for allowing pictures to be taken of their pieces, and Martin Allen and Richard Kelleher at the Fitzwilliam for the same. Thanks also to the vendors listed above who have been found whilst trawling the internet for images.

Discussion and Conclusions

On 30th June 1607 there was £75 0s 10d of silver at the trial of the pyx, representing coins struck during the previous year, since 10th July 1606.

Several of the dies possibly show the mintmark Scallop over struck on the previous mintmark, Rose (**O9**, **O16/R18**, **O22/R25**, **O26** and **O29**). However the circular element under the Scallop may be part of the Scallop design itself. Just one significant die sinker's error has been found with SSEPARET on **R5**. Also **R9** has A over P (or R) in SEPARET.

With just 46 specimens struck from 37 obverse and 40 reverse dies, and just 1 die pair duplicate, this is already suggesting that the sample is very small and the statistics poor. The table below presents the usual statistical analysis for shillings with mintmark Scallop.

		Obverse	Reverse
Sample size	n	48	48
Number of dies	d	37	40
Singletons	d ₁	31	34
2 examples	d ₂	2	4
3 examples	d ₃	3	2
4 examples	d ₄	1	
5 examples	d ₅		
6 examples	d ₆		
Coverage	C _{est}	0.35	0.29
Estimated dies	d ₋	80	101
	d _{est}	148	195
	d ₊	293	423

Table 1. Die statistics of the James I shillings, second issue, mintmark Scallop.

Thus we might expect 148 obverse and 195 reverse dies, though the poor coverage means that this estimate could be out by a factor of two either way!

